



TRUSTED FOR QUALITY

Since 1984

شركة همام للتجارة والمقاولات
HAMMAM TRADING & CONTRACTING CO.



DESCRIPTION

Founded in 1984 by Mr. Abdulla Hammam Al Abdulla, Hammamco is a multi-disciplinary Trading & Construction Company operating in the state of Qatar. We provide construction materials, equipment's and tools.

OUR MISSION

We aim to satisfy our customers' needs through guaranteeing efficiency and quality in all aspects of business activities. We are dedicated in providing quality building materials, equipment's and tools to our customers. We strive to implement a long-term relationship with our clients, based on honesty and integrity.

OUR TEAM

We place great value on the people who work for us and by recruiting and retaining the best staff in the industry. We treat all employees fairly and involve them in decision making for their market place knowledge and its increasing demands.

OUR PHILOSOPHY

We believe that honesty and integrity shall be instilled in every transaction. We believe in working hard for our clients to ensure the best prices and quality products.

OUR BRANDS



Oryx is Hammamco's premium product range for those looking for long lasting and highly durable tools that will enhance their performance and productivity.



Typhoon is Hammamco's professional power tools range, engineered for performance. Typhoon is the ideal choice for tough and most demanding tasks.



Gazel is Hammamco's standard product range for those looking to perform light tasks using cost effective and quality products.



Aqua Club is Hammamco's sanitary and bathroom fittings line, ergonomically designed to suit all interior style and budgets.

EXHIBITIONS



CONTENTS

PAINTING ACCESSORIES

5

Paint Brushes
Paint Rollers
Extension Pole & Paint Tray
Scrapers
Masking Tape
Spray Guns

HAND TOOLS

26

Pliers
Knife
Gun
Saw
Hammer
Measuring Tools
Wrench
Screwdriver
File

POWER TOOLS

45

Cordless Drill
Jig Saw
Impact Drill
Angle Grinder
Cutting Disc

PERSONAL PROTECTION EQUIPMENTS

48

Safety Shoes
Coveralls
Safety Helmet
Safety Goggle
Safety Mask
Safety Gloves

BUILDING MATERIALS

57

Adhesives & Fillers
Waterproofing Products
Construction Foam
Trowels
Adhesive Tapes
General Items

ELECTRICAL TOOLS

71

Tester
Electrical Clamps
Welding Electrode
Industrial Socket

PLUMBING & SANITARY

74

Taps
Bathroom Fittings

HARDWARE

77

Door Handles
Locks
Hinges
Misc

FASTENERS

84

Screws
Hose Clamps



PAINTING ACCESSORIES

PAINING ACCESSORIES

PAINT BRUSHES

ECONOMY BRUSH

- ▶ Pure Black Bristle paint brush
- ▶ excellent coverage with water, Oil based paint & Varnishes
- ▶ Nickel Plated Ferrule
- ▶ Red Varnished Plastic Handle



ITEM CODE	SIZE inch	VIS LENGTH mm	THICKNESS mm
HDP401	1/2"	44	10
HDP402	3/4"	44	11
HDP403	1"	51	12
HDP404	1 1/2"	51	13
HDP405	2"	51	14
HDP406	2 1/2"	57	15
HDP407	3"	57	16
HDP408	4"	64	18

WHITE GOLD BRUSH

- ▶ Pure White Bristle paint brush used with all type of paints
- ▶ Tin Plated Ferrule
- ▶ Raw Wood Handle



ITEM CODE	SIZE inch	VIS LENGTH mm	THICKNESS mm
HDP301	1"	38	9
HDP303	2"	51	11
HDP304	3.	57	13.5
HDP305	4"	64	15.5

PAINING ACCESSORIES

ANGLE BRUSH

- ▶ White Bristle paint brush used for all purpose Water & Oil Based Paints.
- ▶ Tin Plated Ferrule.
- ▶ Raw Soft Wood Handle.



ITEM CODE	SIZE inch	VIS LENGTH mm	THICKNESS mm
HDP901	1"	37	8
HDP903	2"	51	14
HDP904	3"	64	14
HDP905	4"	64	14

DISTEMBER BRUSH

- ▶ White Bristle paint brush used for all purpose Water & Oil based paints.
- ▶ Bristle Fixed with Epoxy Compound.
- ▶ Nickel Plated Ferrule.



ITEM CODE	SIZE mm	VIS LENGTH mm	THICKNESS mm
HDP601	100 x 30	64	30
HDP603	130 x 50	80	50

PAINTING ACCESSORIES

ARTIST BRUSH

Flat & Round



Sizes: NO.1,2,3,4,5,6,7,8,9,10,11,12,14,16



Sizes: NO.1,2,3,4,5,6,7,8,9,10,11,12,14,16

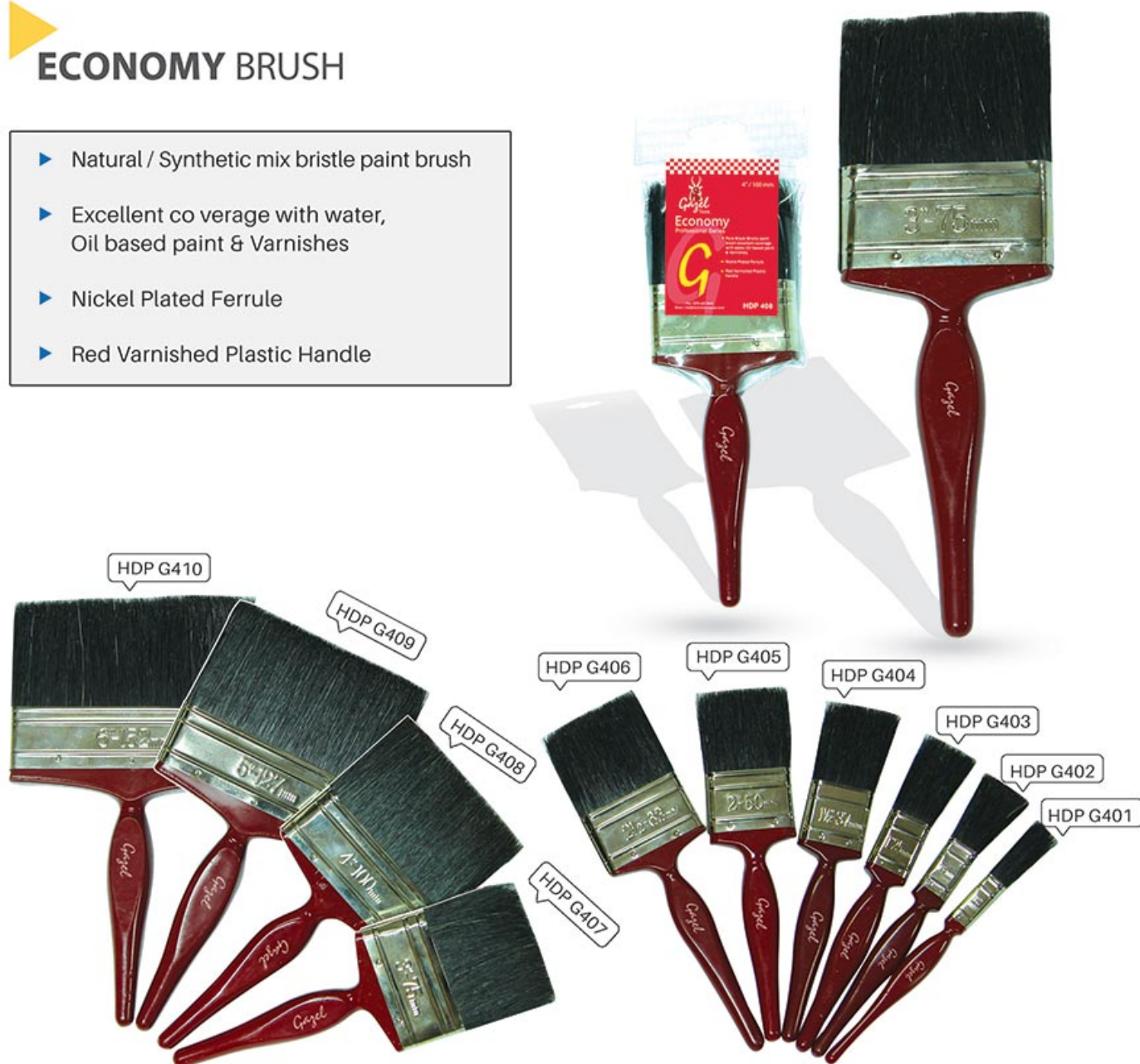
HOBBY SET



Sizes: NO.1,2,3,4,5,6,7,8,9,10,11,12

ECONOMY BRUSH

- ▶ Natural / Synthetic mix bristle paint brush
- ▶ Excellent coverage with water, Oil based paint & Varnishes
- ▶ Nickel Plated Ferrule
- ▶ Red Varnished Plastic Handle



ITEM CODE	SIZE inch	VIS LENGTH mm	THICKNESS mm
HDP G401	1/2"	44	10
HDP G402	3/4"	44	11
HDP G403	1"	51	12
HDP G404	1 1/2"	51	13
HDP G405	2"	51	14
HDP G406	2 1/2"	57	15
HDP G407	3"	57	16
HDP G408	4"	64	18
HDP G409	5"	70	20
HDP G410	6"	70	22

PAINTING ACCESSORIES

WHITE GOLD

- ▶ Pure white Bristle paint brush excellent coverage with water, Oil based paint & Varnishes.
- ▶ Nickel Plated Ferrule.
- ▶ Wood handle varnished W/Tip



ITEM CODE	SIZE inch	Vis Length mm	Thickness mm
HDP G301	1"	44mm	14mm
HDP G302	1 1/2"	44mm	14.5mm
HDP G303	2"	44mm	15mm
HDP G304	2 1/2"	50mm	15mm
HDP G305	3"	50mm	15mm
HDP G306	4	50mm	15mm

PAINT ROLLERS

MEDIUM PILE PAINT ROLLER - BLUE

Blue polyester roller, medium pile with 4 wire cage roller frame

- ▶ For Water Based, Acrylic & Oil Paints
- ▶ Medium Pile for Smooth Surfaces
- ▶ Simulated Sheepskin for Good Value & Performance



ITEM CO DE	FABRIC	SIZE inch	DIAMETER inch	OVERALL LENGTH inch
HDP 1501	POLYESTER	4	1.5	12
HDP 1502	POLYESTER	7	1.5	12
HDP 1503	POLYESTER	9	1.5	12

All sizes sleeve available

PAINING ACCESSORIES

LONG TWISTED PILE PAINT ROLLER - GREEN

Green Nylon Cotton Roller, long pile with 4 wire cage roller frame

- ▶ For Water Based & Acrylic Paints
- ▶ Long Twisted Pile for Rough Surfaces
- ▶ Polyamide Twisted Fabric for Extra Long Life



ITEM CO DE	FABRIC	SIZE inch	DIAMETER inch	OVERALL LENGTH inch
HDP 1603	POLYAMIDE	9	1.5	12

All sizes sleeve available

MOHAIR PAINT ROLLER - WHITE

White Mohair Roller, Short pile with 4 wire cage roller frame

- ▶ For Oil, Varnish & Epoxy Paints
- ▶ Short pile for Wall, Wood & Metal Surfaces
- ▶ Simulated Mohair for Good Value & Performance



ITEM CO DE	FABRIC	SIZE inch	DIAMETER inch	OVERALL LENGTH inch
HDP 1703	MOHAIR	9	1.5	12

All sizes sleeve available

PAINING ACCESSORIES

EPOXY PAINT ROLLER - WHITE

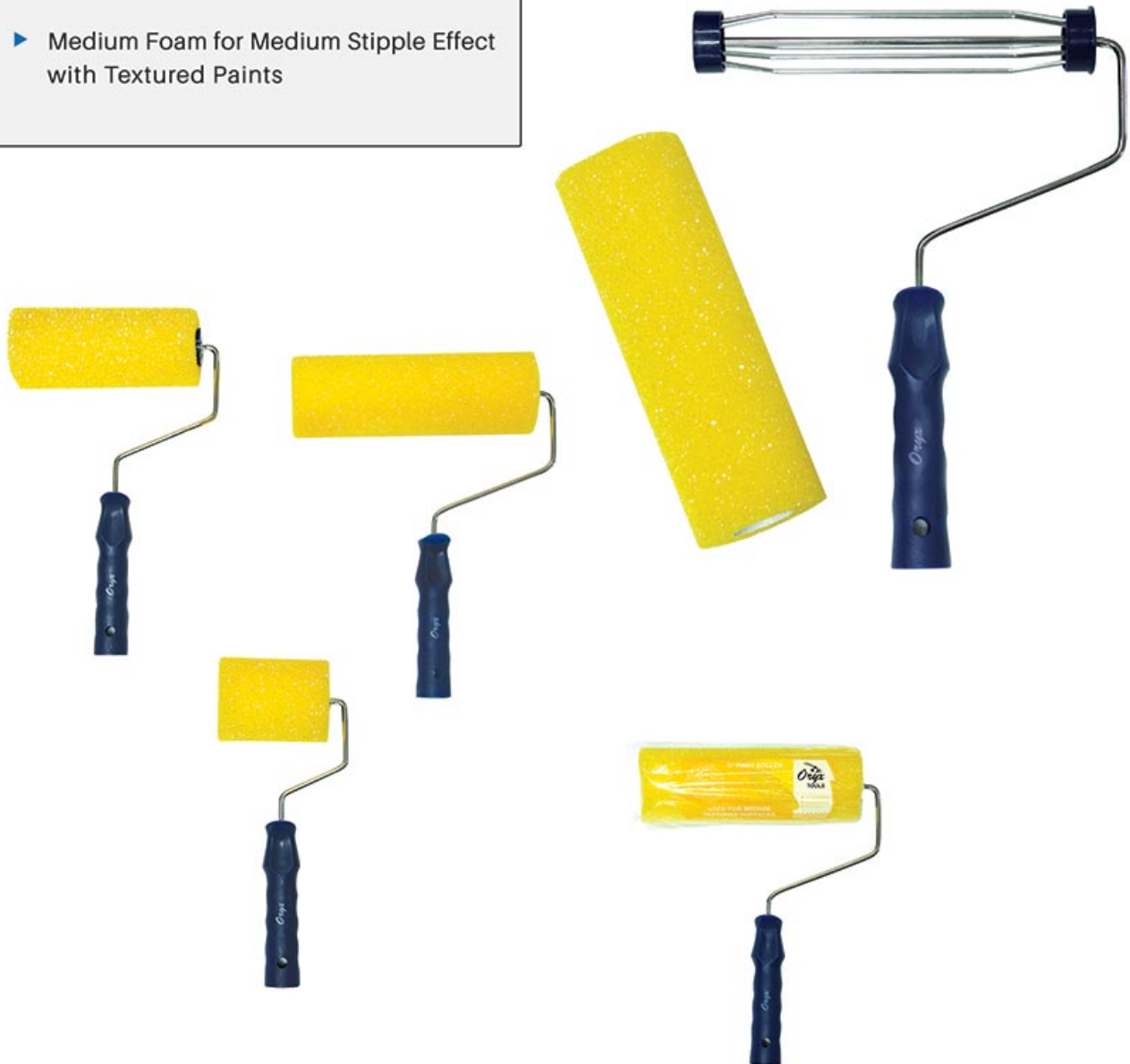
- ▶ For all type of epoxy an floor coatings
- ▶ High density knitted polyester fabric
- ▶ Long life



ITEM CO DE	FABRIC	SIZE inch	DIAMETER inch	OVERALL LENGTH inch
HDP 1704	EPOXY	9	1.5	12

MEDIUM TEXTURED PAINT ROLLER

- ▶ For Textured Paints
- ▶ For Medium Textured Surfaces
- ▶ Medium Foam for Medium Stipple Effect with Textured Paints



ITEM CODE	SIZE inch	DIAMETER inch	OVERALL LENGTH inch
HDP 1803	9	1.5	12

PAINING ACCESSORIES

4" SINGLE ARM RADIATOR ROLLER & REFILLS

Single Arm Radiator Roller Refill

Fabric: Mohair



Item Code	Length inch	Diameter inch	Overall Length inch
HDP 2101	4	1	4

Single Arm Radiator Roller Refill

Fabric: High density Foam



Item Code	Length inch	Diameter inch	Overall Length inch
HDP 2104	4	1.25	4

Single Arm Radiator Roller Refill

Fabric: Acrylic



Item Code	Length inch	Diameter inch	Overall Length inch
HDP 2102	4	1	9

Single Arm Radiator Roller Refill

Fabric: Acrylic



Item Code	Length inch	Diameter inch	Overall Length inch
HDP 2105	4	1	9

Single Arm Radiator Roller



Red & Grey Medium Pile
Fabric: Acrylic

Item Code	Length inch	Diameter inch	Overall Length inch
HDP 2905	4	0.6	16

Single Arm Radiator Roller Handle



Fabric: Acrylic
Usage: For oil & epoxy Paint

Item Code	Length inch	Diameter inch	Overall Length inch
HDP 2906	4	0.6	16

PAINT MIXER



ITEM CODE	CHUCK SIZE mm	DIAMETER inch	LENGTH inch
HDP 2501	10	3	17
HDP 2502	12	4	22

PAINTING ACCESSORIES

EXTENSION POLE



ITEM CODE	METERIAL	LENGTH MTR	DIAMETER OUTER / INNER
HDP 2601	ALUMINIUM	2	22mm/19mm
HDP 2602	ALUMINIUM	3	22mm/19mm

BLACK PLASTIC PAINT TRAY



ITEM CODE	METERIAL	SIZE Inch
HDP 2701	PLASTIC	14 x 11

ORYX SCRAPERS

Oryx professional wall scraper is of UK quality standard

Stainless steel 7 in 1 scraper with plastic handle



Stainless steel scraper with plastic handle

1", 2", 3", 4", 5" & 6"



Sand Paper holder

Code HDP 132

Size 235×100mm



Carbon steel scraper with wooden handle

200mm (8") & 250mm (10")



Carbon steel 4pcs scraper set



PAINING ACCESSORIES

Putty Knife

- Scraper stainless steel
- Wood handle

CODE	SIZE
HT OPK2	2"(5CM)
HT OPK3	3"(8CM)
HT OPK4	4"(10CM)



Fibre Handle Putty Knife

2", 3", 4", 5", 6"

CODE: HT OPKFH2



MASKING TAPE

U S A Quality

ORYX TAPE is a range of versatile products designed for your demanding applications. These tapes provide adhesion to most surfaces in a variety of environments, including moisture and UV

1/2" - 12mm | 1" - 24 mm | 2" - 48mm



SPRAY GUNS

HIGH PERFORMANCE SERIES

HP-P70 Aluminium Cup

Features

- High speed production.
- Spray-jet variable from round concentrated to wide fan pattern

Technical Data

CODE NO.	HP70000
Cup Capacity (litres)	1
Gun distance from work piece mm (inch)	228.6 (9)
Fluid nozzle orifice dia. (mm)	1.7
Required pressure (kgs./sq.cm)	2.5-5
Air consumption of rated pressure lit/min. (c.f.m)	200-283 (7-10)
Material output (cc/min)	200
Max pattern width (mm)	360
Min. Air-compressor (HP)	2
Weight of gun with cup (gms)	960

Applications

Automobiles, Ship building



AIR BRUSH GUN

AB 05

Features

- Lightweight pen gun with a larger cup
- Improved stainless steel needle & nozzle

Technical Data

CODE NO.	AB 0500
Cup Capacity (ml)	10
Max pattern width (mm)	20
Gun distance from work piece mm (inch)	50 (2)
Fluid nozzle orifice dia. (mm)	0.3
Required pressure (kgs./sq.cm)	1.5
Air consumption of rated pressure lit/min. (c.f.m)	5 (0.17)
Material output (cc/min)	2
Min. Air-compressor (HP)	0.25
Weight of gun (gms)	90



Applications

The Air Brush guns are small and lightweight pen guns suitable for small artistic spray-jobs like free-hand, stencils, idol / model making etc which require precision spray. They are ideal for artists & artisans in design shops, art departments of advertising agencies, fine art studios, photographic studios and architectural studios. Their versatility makes them adaptable to using any coloring agent, inks and lacquer.

PAINTING ACCESSORIES

ELECTRIC SPRAY GUN

E- 88

Features

- Simpler design hence convenient
- Stronger pump giving efficient performance
- Uses superior valve design for excellent atomization
- No need of compressor. Plug in & Spray

Technical Data

CODE NO.	880000
Max. Delivery rate (test liquid: water) lit/min.	0.26
Rated power (W)	65
Voltage V	220-230 / 110
Frequency Hz	50 / 60
Pressure Max (bar)	150
Container holds (cu. cm)	800
Weight kg	1.43
Noise level dB	90/95

Applications

Furniture, Photographers, Sculpture painting, Garages, Insecticides, Preservatives, Housekeeping



CONVENTIONAL SERIES

TYPE - P 80

Features

- Used on large surface items
- Spreader control valve
- Stainless steel cup

Technical Data

CODE NO.	80000
Cup Capacity (litres)	0.75
Gun distance from work piece mm (inch)	228.6 (9)
Fluid nozzle orifice dia. (mm)	1.7
Required pressure (kgs./sq.cm)	2.5-5
Air consumption of rated pressure lit/min. (c.f.m)	200-283 (7-10)
Material output (cc/min)	300
Max pattern width (mm)	300
Min. Air-compressor (HP)	2
Weight of gun with cup (gms)	850

Applications

Ideal for large finishing jobs such as automobiles, shipbuilding etc where speed is of prime importance.



AIR BLOW GUN

Features

- Comfortable pistol grip
- Quick easy trigger action.
- It also comes along with a removable nozzle and connection nipple.
- The Gun is fitted with a non-leak air-valve and can be used on both high and low pressures

Technical Data

CODE NO.	AG - 03
Fluid nozzle orifice dia. (mm)	3
Min. required pressure (kgs./sq.cm)	3 - 4
Air consumption of rated pressure lit/min (c.f.m)	212 (7.5)
Min. Air-compressor (HP)	1 - 2
Weight of gun (gms)	220

Applications

It is ideal for use in machine shops, plastic moulding industry, foundries and vehicle body shops.



ABRASIVE & CLEANING GUN SAND BLASTING GUN

Features

Features

- Makes any cleaning /refinishing project quicker and easier.
- It leaves the surface ready for refinishing by removing old paint, dirt, rust and corrosion.
- Suitable for cleaning small areas such as wheels or chassis members or for cleaning larger areas.
- These guns accept a variety of abrasives such as sand, iron grit and other proprietary beading.
- Available in gravity & suction type

Suction Type

Technical Data

CODE NO	SBG-03S
Fluid nozzle orifice dia. (mm)	4
Min. required pressure (kgs./sq.cm)	4
Air consumption of rated pressure lit/min (c.f.m)	212 (7.5)
Min. Air-compressor (HP)	2
Weight of gun with cup / pipe (gms)	534

Gravity Type

Technical Data

CODE NO	SBG-03G
Fluid nozzle orifice dia. (mm)	4
Min. required pressure (kgs./sq.cm)	4
Air consumption of rated pressure lit/min (c.f.m)	212 (7.5)
Min. Air-compressor (HP)	2
Weight of gun with cup / pipe (gms)	435



HAND TOOLS



HAND TOOLS

PLIERS

LINESMAN PLIERS



- ▶ American Type combination plier
- ▶ Drop forged high carbon or chrome vanadium steel longer life and durability
- ▶ Accord with European GS standard
- ▶ Two color handle, handle material TPE
- ▶ Ergonomic designed for using comfortably

CODE	SIZE
HT OACP6	6" L(MM) 150
HT OACP8	8" L(MM) 200

AVIATION SNIP



- ▶ Heavy duty snips with double layer handle
- ▶ Material: Carbon Steel



CODE	SIZE
HT OASL10	10" LEFT
HT OASR10	10" RIGHT
HT OASS10	10" STRAIGHT

HAND TOOLS

LONG NOSE PLIERS

- ▶ American Type long nose plier
- ▶ Drop forged high carbon or chrome vanadium steel longer life and durability Accord
- ▶ with European GS standard
- ▶ Two color handle, handle material TPE
- ▶ Ergonomic designed for using comfortably

CODE	SIZE
HT OLN8P8	8"



SIDE CUTTING PLIERS

- ▶ High quality tools designed for professional use
- ▶ Tested to 10,000 AC/1,500V DC
- ▶ Bi-material TPR soft grip handles
- ▶ Chrome vanadium steel

CODE	SIZE
HT OSC8P8	8"



STRAIGHT JAW GRIP LOCKING PLIER

- ▶ High carbon steel or chrome vanadium steel jaw for maximum
- ▶ Quick easy locking and release action
- ▶ Guarded release help keep work fast and safe
- ▶ Curved jaws with wire cutters
- ▶ Turn screw to adjust holding pressure fit work



CODE	SIZE
HT OJGP10	10" 250 L(mm)

D4 TYPE GROOVE JOINT PLIERS

- ▶ Drop forged high carbon or chrome vanadium steel longer life and durability
- ▶ Heat treated
- ▶ Two color TPR soft-grip handle
- ▶ Accord with European GS standard
- ▶ Ergonomic designed for using comfortably



CODE	SIZE
HT OGJP10	10" 250 L(mm)

HAND TOOLS

KNIFE

PVC PIPE CUTTER

- ▶ Body Material: Aluminium
- ▶ Blade Material: High carbon / 65 Mn Steel
- ▶ Cutting Capacity: 42mm

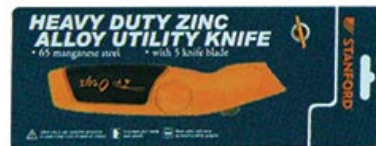
CODE	SIZE
HT OPPC	Cuting Capacity 42MM



HEAVY DUTY ZINC ALLOY UTILITY KNIFE

- ▶ 65 manganese steel
- ▶ With 5 knife blade

CODE
HT OHDUK



UTILITY KNIFE

- ▶ High Quality 60 # Blade
- ▶ Push-out storage case with hanger

CODE
HT OUKP



GUN

RIVET GUN

- ▶ Chrome vanadium jaws
- ▶ Steel construction with ergonomic grip handle
- ▶ Spring loaded handle ejects rivet stem automatically
- ▶ Fits rivet sizes: 2.4mm 3.2mm 4.0mm 4.8mm
- ▶ One wrench stored in handle

CODE	SIZE
HT ORG10	10"



CAULKING GUN

Aluminum trigger iron powder coated

CODE	SIZE
HT OSG9	9"



HEAVY DUTY SILICONE GUN 9"

Aluminum trigger iron powder coated

CODE: HT OHDSG9



HAND TOOLS

SAW

PRUNING SAW

- ▶ Ground high carbon steel blade hard chrome plated
- ▶ Aggressive pull stroke cut impulse hardening
- ▶ Super soft handle
- ▶ Convenient safety sheath
- ▶ Strong ABS plastic frame
- ▶ Teeth pitch: 7 points



CODE	SIZE (MM)
HT OPS	270

HAND SAW

- ▶ Precision ground teeth
- ▶ Ergonomic comfort nubber grip handle
- ▶ Double grip handle

CODE	SIZE
HT OHS18	18"
HT OHS20	20"



HACKSAW FRAME

- ▶ Aluminum Handle
- ▶ Round Tube

CODE	SIZE
HT OHF12	12"



HANDSAW BLADE

- ▶ All hard high speed blade hacksaw blade

CODE	SIZE
HT EHB	24 TEETH



HAMMER

CLAW HAMMER - FIBER HANDLE

- ▶ Drop-Forged alloy steel
- ▶ Reinforced fibre glass shaft with plastic cover
- ▶ Impact-Absorbent soft grip
- ▶ Ergonomic comfort-grip TPR handle.



CODE	SIZE
HT OCH500	500G
HT OCH700	700G

CLAW HAMMER - WOOD HANDLE

- ▶ Drop-Forged alloy steel
- ▶ Reinforced fibre glass shaft with plastic cover
- ▶ Impact-Absorbent soft grip
- ▶ Hard wood handle



CODE	SIZE
HT OCHW500	500G
HT OCHW700	700G

MECHANIST HAMMER

- ▶ Reinforced fibre glass shaft, impact-absorbent soft grip
- ▶ Drop - dorged alloy steel head
- ▶ Polished striking face
- ▶ Ergonomic comfort-grip TPR handle



CODE	SIZE
HT OMH1000	1KG
HT OMH500	500G

AMERICAN STYLE CLAW HAMMER - FIBER HANDLE

CODE: HT OCHFH



HAND TOOLS

RUBBER Mallet

- ▶ Designed to protect the workpiece where a metal hammer may cause damage
- ▶ Reinforced fibre handle glass shaft
- ▶ Ergonomic comfort-grip TPR handle



CODE	SIZE
HT ORMM	MEDIUM - 32 OZ
HT ORMS	SMALL - 24 OZ

MASONS HAMMER

- ▶ Strong and light weight tubular shaft
- ▶ Hardened and tempered
- ▶ Ergonomic comfort-grip TPR handle



CODE	SIZE
HT ORH16	16 Oz

AMERICAN STYLE CLAW HAMMER STEEL - TUBE HANDLE

CODE	SIZE
HT OCHFH	8 OZ



SLEDGE HAMMER

4LB, 6LB, 8lb, 10lb

CODE: HT OSH4L, HT OSH6L, HT OSH8L, HT OSH10L



MEASURING TOOLS

MEASURING TAPE

- ▶ Tri-stop heavy duty cover
- ▶ Tape measure

CODE	SIZE
HT OMT3	3 MTR
HT OMT5	5 MTR
HT OMT7	7.5 MTR
HT OMT10	10 MTR



MEASURING TAPE - HEAVY DUTY

- ▶ Tri-stop heavy duty rubber cover
- ▶ One self-locking switch

CODE	SIZE
HT OMTH5	5 MTR
HT OMTH7	7.5 MTR



HAND TOOLS

MEASURING TAPE - FIBERGLASS

- ▶ Fiberglass
- ▶ Shock resistant with closed case
- ▶ Fold handle for quick rewind tape
- ▶ Comply with GS standard

CODE	SIZE
------	------

HT OMT 30	30 M
-----------	------

HT OMT 50	50M
-----------	-----



SPIRIT LEVEL

- ▶ Aluminum Frame
- ▶ ABS ends for shocks absorption
- ▶ 3 High Visible vials
- ▶ Strong-holding magnetic base

CODE	SIZE
------	------

HT OSL12	12"
----------	-----

HT OSL18	18"
----------	-----

HT OSL24	24"
----------	-----

HT OSL30	30"
----------	-----

HT OSL40	40"
----------	-----



WRENCH

PIPE WRENCH

- ▶ Sturdy cast iron handle
- ▶ Drop forged chrome vanadium or high carbon steel
- ▶ Dip or spray the surface of plastic processing
- ▶ Replaceable hook and heel jaws



CODE	SIZE
HT OPW8	8" L(MM) 600
HT OPW10	10" L(MM) 200
HT OPW12	12" L(MM) 250
HT OPW14	14" L(MM) 300
HT OPW18	18" L(MM) 350
HT OPW24	24" L(MM) 450

ADJUSTABLE WRENCH

- ▶ Hardened and heat treated with satin finish for added
- ▶ Corrosion resistance. Features smooth action jaw and
- ▶ Double dipped non-slip foam grip for added comfort and
- ▶ Control-even with greasy hands



CODE	SIZE
HT OAW6	6"
HT OAW8	8"
HT OAW10	10"
HT OAW12	12"

COMBINATION WRENCH

- ▶ High quality forged chrome vanadium steel
- ▶ Satin chrome plated against corrosion

- (A) Chrome Plated
(B) Satin Plated



CODE	SIZE
HT OCW1214	12X14MM
HT OCW1315	13X15MM
HT OCW1617	16X17MM
HT OCW1618	16X18MM
HT OCW1719	17X19MM
HT OCW1819	18X19MM
HT OCW2022	20X22MM
HT OCW2123	21X23MM
HT OCW2224	22X24MM

HAND TOOLS

COMBINATION SPANNERS

- ▶ High quality forged chrome vanadium steel, 15° offset as per DIN standard
 - ▶ Satin chrome plated against corrosion
 - ▶ DIN 3113
- (A) Chrome Plated
(B) Satin Plated



CODE	SIZE
HT OCS14	14MM
HT OCS15	15MM
HT OCS16	16MM
HT OCS17	17MM
HT OCS18	18MM
HT OCS19	19MM
HT OCS20	20MM
HT OCS21	21MM
HT OCS22	22MM
HT OCS23	23MM
HT OCS24	24MM
HT OCS25	25MM

DOUBLE OFFSET RING SPANNER

- ▶ High quality forged chrome vanadium steel, with 75° offset ring end.
 - ▶ Satin chrome plated against corrosion
- (A) Chrome Plated
(B) Satin Plated



CODE	SIZE
HT ODORS1618	16X18MM
HT ODORS1719	17X19MM
HT ODORS2022	20X22MM
HT ODORS2123	21X23MM
HT ODORS2224	22X24MM

8 PCS HEX KEY

- ▶ Material: Carbon Steel, S2, Cr-V



CODE	SIZE
HT O8HK	2mm
	2.5mm
	3mm
	3.5mm
	4mm
	5mm
	6mm
	8mm



6PCS DOUBLE OPEN END WRENCH SET

CODE: HT ODOW6



6PCS DOUBLE RING OFFSET WRENCH SET

CODE: HT ODROW6



5PCS PHILLIPS HEAD SCREWDRIVER BIT SET

CODE: HT OPSB5



10 PCS PHILLIPS DOUBLE HEAD SCREWDRIVER BIT SET

CODE: HT OPDSB10

HAND TOOLS

SCREWDRIVER

6 PCS SCREWDRIVER SET (SLOTTED/PHILLIPS)

- ▶ S2 or chrome vanadium steel
- ▶ Matt chrome plated
- ▶ Black magnetic tip
- ▶ Injection LOGO ergonomic
- ▶ comfort grip handle
- ▶ Comply with GS standard

CODE	SIZE
HT OSS356	SL(MM) 3 x 75
	SL(MM) 5 x 100
	SL(MM) 6 x 25
	PH(MM) 3 x 75
	PH(MM) 5 x 100
	PH(MM) 6 x 125

CODE	SIZE
HT OSS556	(MM) -5 x 100MM
	-5 x 150MM -6 x 150MM
	+5 x 100MM +5 x 150MM
	+6 x 150MM



SCREWDRIVER GLASS TYPE HANDLE - SLOTTED / PHILLIPS

CODE	SIZE	CODE	SIZE
HT OSDF6	6" x 8MM	HT OSDP6	6" x 8MM
HT OSDF8	8" x 8MM	HT OSDP8	8" x 8MM
HT OSDF10	10" x 8MM	HT OSDP10	10" x 8MM
HT OSDF12	12" x 8MM	HT OSDP12	12" x 8MM



29PCS RATCHET SCREWDRIVER SET

CODE: HT ORSDS29



FILE

STEEL FILE FLAT

8", 10", 12"

CODE: HT OSF8F, HT OSF10F, HT OSF12F



STEEL FILE ROUND

8", 10", 12"

CODE: HT OSF8R, HT OSF10R, HT OSF12R



STEEL FILE HALF ROUND

8", 10", 12"

CODE: HT OSF8HR, HT OSF10HR, HT OSF12HR



WOOD FILE FLAT

8", 10", 12"

CODE: HT OWF8F, HT OWF10F, HT OWF12F



WOOD FILE ROUND

8", 10", 12"

CODE: HT OWF8R, HT OWF10R, HT OWF12R



WOOD FILE HALF ROUND

8", 10", 12"

CODE: HT OWF8HR, HT OWF10HR, HT OWF12HR

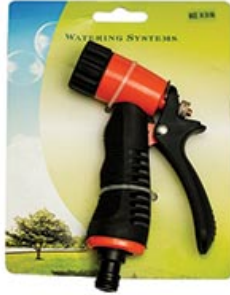


HAND TOOLS

GARDEN HOSE SPRAY GUN

CODE: HT OGHSG

SIZE: 3/4



GARDEN HOSE CART

CODE: HT OGHC



TANGLE FREE FLAT HOSE REEL

CODE: HT OFHR15

SIZE: 15 MTR X 1/2"



PRESSURE SPRAYER

CODE: HT OPS2

SIZE: 2LTR



AUTOMATIC WIRE STRIPPER

CODE: HT OAWS525

SIZE: 7"



WIRE STRIPPER

CODE: HT OWS528



6 PCS SAW BLADE SET 12"

CODE: PT TSBS12



TWO WHEEL ALUMINUM VEHICLE



CODE: HT O2WAV90
90 KG

FOUR WHEEL PLATFORM TRUCK



CODE: HT O4WPT150
300 KG

ADJUSTABLE BASIN WRENCH

CODE: HT OABW11
11"



HAND TOOLS

3 PCS PLASTIC TOOL BOX SET

- ▶ 13.5" 16" 20" 3 Pcs Plastic Tool Box

CODE	SIZE
HT OPTBS3	13.5" 16" 20"



HEAVY DUTY TILE CUTTER

- ▶ For parallel cuts or parallel & angled cuts <two choices of gauge>
- ▶ Width of the base: 165mm
- ▶ Dia of chromed rod: 16mm
- ▶ Cuts up to 12mm thick
- ▶ Max working length (mm): 400,500,600
- ▶ Replaceable cutting blades: YG6X, Ø22X Ø6x2mm
- ▶ Packing: Color box or blow mould case < only for 400 mm and 600 mm > m >

CODE
HT OHDTTC



OIL SPRAY GUN

Features

- ▶ Internal atomization type nozzle
- ▶ Adjustable light / heavy degree of atomization

Technical Data

CODE NO.	0G - 03
Fluid nozzle orifice dia. (mm)	7.5
Required pressure (kgs./sq.cm)	4 - 6
Air consumption of rated pressure lit/min (c.f.m)	180 (6.3)
Min. Air-compressor (HP)	1 - 2
Weight of gun (gms)	500

Applications

Vehicle workshops, service centres





POWER TOOLS

POWER TOOLS

POWER TOOLS

12V LI-ION CORDLESS
DRILL - 2 BATTERY

CODE: PT TC311712



14.4V LI-ION CORDLESS
DRILL - 2 BATTERY

CODE: PT TC311712



PORTABLE BLOWER 400W

CODE: PT TB2204



PENDULUM JIG SAW 400W

CODE: PT TJ1521



13MM IMPACT DRILL 500W

CODE: PT TID106



115MM ANGLE GRINDER 500W

CODE: PT TAG406



HOLE SAW

- Can be cut include stainless steel including all machinable metal, wood, wood with nails, plastics, fiber glass, drywall, fiber-board, and composite materials

CODE	SIZE
PT THSS5	1-1/4" (32mm)
	1-1/2" (38mm)
	1-3/4" (44mm)
	2-1/8" (54mm)
	1 PC Arbor



METAL FLAP DISC WITH FIBRE GLASS BACKING 115MM



CODE	SIZE
PT TFDP40	P40
PT TFDP60	P60
PT TFDP80	P80
PT TFDP120	P120

CUP BRUSH-KNOT ARBOR



CODE	SIZE
PT TCBKA	Dimension: 3" 75mm
	Dimension: 4" 100mm

CUP BRUSH-TWIST KNOT - ARBOR



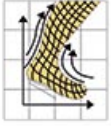
CODE	SIZE
PT TCBTKA	Dimension: 3" 75mm
	Dimension: 4" 100mm

PERSONAL PROTECTION EQUIPMENTS



PERSONAL PROTECTION EQUIPMENTS

SAFETY SHOES



TG 605
High Cut Safety Shoes



- Chemical resistant, Oil Resistant, Anti Static, Impact Resistant, Penetration Resistant, Slip Resistant, Water Resistant, Heel Energy Absorption

Toe Cap: EN 12568

Protects toes from shocks and crushing up to 200 Joules.

PERSONAL PROTECTION EQUIPMENTS

DISPOSABLE COVERALLS

Standard: PP
Material: 100% Polyester, knitting fluo fabric
Color: White
Size: M, L, XL, 2XL
Weight: 40 g
Usage A grade



REFLECTIVE VEST

Standard: CE EN 471
Material: 100% Polyester, knitting fluo fabric
Color: Fluorescent orange & green
Size: M, L, XL, 2XL
Quality: 100g
Reflecting tape: A grade



Material: mesh
Color: Fluorescent orange & green
Size: S, M, L, XL, 2L
Quality: 55g
Reflecting tape: A grade



SAFETY HELMET

Four Point Adjustable ratchet Type Helmet with Chin Strap

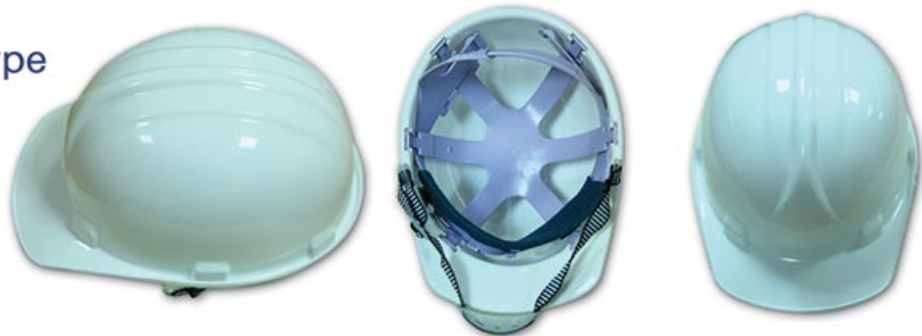
Standard: CE EN397
Material: HDPE - High Density Polyethylene
 Light weight, Good strength, Good toughness
Protecting ability: Anti-puncture, Anti-shock
Adjust manner: Ratchet
Fix head suspension: 4 point
Weight: (shell weight + head suspension weight)
 324g + 104g

Available Colours:



Six point Plug Type

CE



HEADGEAR FACE SHIELD

Headgear with HDPE browguard eliminates forehead injury completes with 8" x 15-1/2 plastic bound pc clear visor



WELDING MASK

CE



PERSONAL PROTECTION EQUIPMENTS

SAFETY GOGGLE



SAFETY GLOVES

NATURAL COW SPLIT LEATHER GLOVES

Yellow fabric black and rubberized cuff

Leather gloves provide protection from occupational hazards. Construction workers use leather gloves for added grip and for protecting their hands.

Available sizes:
10.5" (200gm)



SAFETY GLOVES

COTTON WORKING GLOVES

Used for warehousing, parts handling, automotive industry fabrication, manufacturing, painting etc.

Available sizes:
450gm/10 pairs



POLY COTTON GLOVES

Polycotton glove is ideal for a dry environment to protect against dirt, dust and fingerprints. It can also be worn under a rubber or nitrile glove for extra comfort for extended periods and is good for absorbing perspiration

Available sizes:
750gm/10 pairs



RED WELDING LEATHER GLOVES

welding gloves provides protection against metal splashes, flames and ultraviolet radiation. This gloves is usually manufactured from flame-proof natural fibers and are heat-resistant leather

Available sizes:
16"



PERSONAL PROTECTION EQUIPMENTS

RED LATEX GLOVES

Latex glove is used to protect the wearer from contact with potentially damaging chemical or biological materials.

Available sizes:
450gm



RUBBER GLOVES

its primary is protection of the hands while performing tasks involving chemicals. These are worn during dish washing to protect the hands from hotter water.

Available sizes:
100gm & 200gm



PVC BLUE DOUBLE SIDE DOTTED GLOVES

Made from superior quality knitted cotton with PVC dots. One side dots as well as double side dots are available. Perfect grip. Most comfortable and durable.

Available sizes:
1200gm/12 pairs



SAFETY MASK

RESPIRATOR 303

Usage: dust , One RC101 included

Respirator 304

Usage: dust , Two RC101 included

Respirator 305

Usage: dust , fume, poison, acid, farm chemical
one RC203 included, Color: black



CARTRIDGE

SLR-RC101:

fit for 303 & 304

Usage: for dust

SLR-RC201:

fit for 305 & 306

Usage: for dust

SLR-RC203:

fit for 305 & 306

Usage: for poison



PARTICULATE RESPIRATOR

ORS PRN95

High-filtration dustproof, respirator



PERSONAL PROTECTION EQUIPMENTS

Dust Mask (Water Resistant) 50 pieces

Advantages

Extremely Lightweight

Metal nose clips to fit individual facial Contours

Does not impair breathing, voice and vision

No interference with glasses



SAFETY HARNES

Material: 50mm Terylene

Colour: Two colour (Red / Grey)

Rings: One forged ring on back

Hooks: Two



SAFETY EAR PLUG

Ear Defenders

Impact - resistant

ABS shell body

soft foam pad

NRR: 24dB





BUILDING MATERIALS

BUILDING MATERIALS

ADHESIVES

WALL PAPER ADHESIVE

Medium Grade Ready Mixed Wall Covering Adhesive

Specially formulated liquid adhesive that will not shrink textiles or fabrics. Perfect for specialty wall-coverings and providing an excellent strong final bond. Contains fire retardant for critical surface spread of flame. Added PVA for high initial tack and strong final bond.

Available Size: 2.5 kg & 10 kg

Made in UK



ALL PURPOSE WALLPAPER ADHESIVE POWDER

- ▶ Suitable for all standard retail wallpapers including heavyweight, washable, vinyl, and blown vinyl.
- ▶ Quick mix in 3 minutes.
- ▶ Super strong bond and excellent slip to assist pattern matching

Available Size: 200 gm

Made in UK



FILLERS

ALL PURPOSE POWDER FILLER

Suitable for both interior and exterior use

Beeline Black all purpose powder filler provides a smooth permanent repair to plaster, brick, stone, wood and most building materials

- ▶ Easy to sand
- ▶ Drillable

Available Sizes: 454 Gm & 1.5 kg

Made in UK



ADHESIVES

FEVICOL WALL FIX FG

All Purpose Wallpaper Adhesive

Fevicol Wall Fix FG is all Purpose Wallpaper Adhesive, easy to mix powder type product, contains chemically incorporated anti-mould additives. With excellent easy slip properties, it may be used for all wallpapers including light medium, heavy duty wallpapers, vinyls and heavily embossed wallpapers. Also ideal for use as a size for sealing new plaster walls prior to papering.

- ▶ Quick and easy preparation
- ▶ Reliable long lasting results
- ▶ Resists mould growth
- ▶ Easy slide for perfect pattern matching



FEVICOL WPA HEAVY GRADE

Ready Mix Wallpaper Adhesive

Fevicol WPA Heavy Grade is a ready mixed synthetic resin based wall covering adhesive, which has been specially formulated for use with nonwoven and vinyl backed wall papers. It has antifungal characteristics to protect fungal growth.

- ▶ Excellent wet tack and slip
- ▶ Excellent adhesion and durability
- ▶ Fungal resistance



WATERPROOFING PRODUCTS

DR. FIXIT PIDIPROOF LW+

DR. FIXIT PIDIPROOF LW+ is an integral waterproofing liquid admixture which has to be used with cement in concrete and plaster mix. It helps in making concrete and plaster more cohesive and watertight, thus making it

Dosage/Coverage

200 ml for 50 kg bag of cement

Packing

1 ltr, 5 ltr, 10 ltr, & 20 ltr

Features

- ▶ Makes concrete more cohesive & protects steel bar corrosion
- ▶ Increases strength of concrete
- ▶ Decreases plaster rebound loss
- ▶ Reduces the permeability of water into concrete and stops rising dampness
- ▶ Reduces shrinkage crack development in plaster & concrete



DR. FIXIT SUPER LATEX

Dr. Fixit Super Latex This is a multipurpose waterproofing liquid which is to be mixed with cement for waterproof coating & concrete repair. It is an economical waterproofing and dampproofing solution and is also recommended to be used in the painting process for superior performance and waterproofing.

Dosage/Coverage

Waterproof Coating/Dampness Repair = 1 part Super Latex & 1.5 part Cement, Coverage 20 to 22 sq. ft in 2 coats.

Bond Coat (old to new concrete / plaster) = 1 part Super Latex & 1 part cement, Coverage 70 to 80 sq. ft in 1 coat

Crack Repair PMM (Polymer Modified Mortar) = 1:3:10:30
(Super Latex: water: cement: sand)

Wall Putty = 10% Super Latex by the weight of wall putty
(5 kg Super Latex in 50 kg wall putty)

Sealer Coat = 1 part super latex: 1 part water. Coverage 100 to 110 sq. ft in 1 coat.

Paint/Primer = 1 ltr Super Latex in 20 ltr Paint/Primer.

Packing

500 gm, 1 kg, 5 kg, 20 kg

Features

- ▶ Used for multiple application like dampproofing bonding, repairing & waterproofing
- ▶ Prevents leakage & dampness
- ▶ Decreases water permeability in putty and paint
- ▶ Economical and easy to brush apply



DR. FIXIT PIDIFIN 2K

Dr. Fixit Pidifin 2K is an acrylic cementitious waterproof coating which is applied to waterproof and protect concrete and masonry substrates.

Dosage/Coverage

1 kg will cover 6-6.5 sq ft in 2 coats (ratio: 2 kg powder to 1 kg liquid)

Packing

3 kg, 9 kg, 15 kg & 30 kg

Features

- ▶ Elastomeric coating with 40-50% elongation
- ▶ Film thickness: 1 mm, four times thicker than ordinary polymer cements coating
- ▶ Excellent waterproof coating to ingress of water
- ▶ Excellent adhesion to concrete & masonry surfaces
- ▶ Easy to apply by brush



DR. FIXIT FASTFLEX

Dr. Fixit Fastflex is a two-component cementitious coating, composed of high quality cement, properly selected & graded fillers, additives and liquid polymer.

Dosage/Coverage

1 kg will cover 5-6 sq ft in 2 coats (ratio: 7 kg powder to 5 kg polymer)

Packing

12 kg, 48 kg

Features

- ▶ Elastomeric coating with 130-150% elongation, with easy brush application
- ▶ Film thickness: 1.2 mm, four times thicker than ordinary polymer cement coating
- ▶ Excellent waterproof coating to ingress of water
- ▶ Excellent adhesion to concrete & masonry surfaces
- ▶ Food grade product, potable with drinking water



BUILDING MATERIALS

DR. FIXIT RAINCOAT 2 IN 1

Dr. Fixit Raincoat 2 in 1 is an elastomeric acrylic waterproof coating for roofs, which can be easily brush applied, with excellent crack bridging ability, and can accommodate movements due to thermal variations. It can be applied as a self-diluting primer and undiluted coat which makes it a 2-in-1

Dosage/Coverage

Primer Application: Dilute 1 ltr material with 500 ml water.

Coverage 100 to 110 sq ft in 1 coat.

2 coats for Roof (undiluted) – Coverage 20 to 22 Sq ft / ltr / per coat.

Packing

1 ltr, 4 ltr, 10 ltr, 20 ltr

Features

- ▶ Single product, can be applied as primer & waterproof coating
- ▶ Foot trafficable
- ▶ Excellent crack bridging ability with 500 microns film thickness
- ▶ Easy to apply with brush or roller
- ▶ Reduces shrinkage crack development in plaster & concrete



CRYSTALLINE COATING FOR BASEMENT / UNDERGROUND WATER TANK

Dr. Fixit Polyplus CP & Dr. Fixit Polyplus CP admix is a crystalline activated product. When it comes in contact with water, it forms crystals which penetrate deep in the concrete surface, blocking pores, voids and cracks, and effectively sealing against water ingress.

Dosage for Coatings

Mix 5 kg powder & 2 ltr water.

Coverage: 1.4 -1.6 sq. m/Kg in single coat.

Packing

1 kg, 5 kg & 25 kg (Polyplus CP)

Dosage for Concrete Admix

0.8% to 1.2 % by weight of cement

Packing

5 kg & 30 kg (Polyplus CP Admix)

Features

- ▶ Stops water movement through concrete; becomes an integral part of the structure
- ▶ Protects reinforcing steel against corrosion
- ▶ Resists permeation of water from positive & negative side of the concrete
- ▶ Protects concrete against contaminated water & corrosion



DR. FIXIT DAMPGUARD

Damp-proof epoxy coating for treating internal dampness on internal walls & ceilings. A water based epoxy coating for treating internal dampness on walls & ceilings. It can be also used to fill cracks by mixing with white cement & as putty by mixing with OPC or White Cement in high damp areas

Dosage/Coverage

Dr. Fixit Dampguard finish coat - 7.5 - 8.5 sq.mtr/ kg per coat.

Dr. Fixit Dampguard + OPC Cement putty - 0.6 - 0.8 sq. mtr/ kg /coat.

Note: Not recommended for aggressive rising dampness efflorescence.

Packing

500 gm, 1 kg

Features

- ▶ Two-component water dilutable coating with good coverage; economical cost
- ▶ Reduces water absorption & permeability
- ▶ Provides excellent adhesion to all cementitious substrates
- ▶ Certified for potable water contact by CFTRI, Mysore
- ▶ Excellent resistance to salt water, mild acids, alkalis & soap water



DR. FIXIT CRACK-X POWDER

Dr. Fixit Crack-X Powder is a cement based polymer modified powder material for filling cracks in plastered surface. It is composed of cement, properly selected aggregates, polymer & additives which requires on site addition of water only. It is ideal to fill 3 to 5 mm wider static cracks, for leveling up walls before tiling and for skimming expanded polystyrene and asbestos because it has strong adhesion, is non-shrink in nature, good water resistance properties & weathering durability. Cracks filled with Dr. Fixit Crack-X Powder enhances the subsequent paintings quality and life.

Dosage/Coverage

18-20 running meters/kg for 5 mm x 5 mm groove

Packing

500 gm, 1 kg, 5 kg, 25 kg

Features

- ▶ Economical cracks filler for 5 mm width crack
- ▶ Strong adhesion to common building substrates
- ▶ Does not contain solvent thus no emission of vapours
- ▶ Requires only addition of water at site
- ▶ Reduces paint consumption



CONSTRUCTION FOAM

USPRO ULTRA

USPRO ULTRA is a CFC free one-component polyurethane foam sealant and mounting foam. The cured foam is rigid and has a fine structure with partly closed cells.

Applications

USPRO ULTRA offers excellent properties by sealing, insulating and filling of joints, cracks and holes, eg...

- ▶ Between partition wall with ceilings
- ▶ Structural space between wooden door-frames and walls
- ▶ For structural and fitting space between prefab elements
- ▶ Seams between chimneys, roof protection, roof panels and wall panels
- ▶ For around cables and pipes, break-through in wall and ceiling

Properties

- ▶ One component, no need for previous mixing - High foaming speed
- ▶ Excellent adhesion on most of construction materials without primer
- ▶ Very good insulating properties - Very good dimensional stability
- ▶ Very good insulating properties
- ▶ Very good dimensional stability
- ▶ Cured product can be painted, drilled or cut



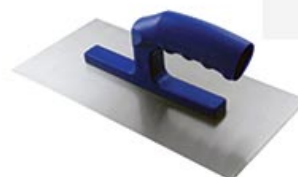
PLASTERING TROWEL

- ▶ Stainless steel plastering trowel with wooden handle



Code	HDP 128
Size	280×125mm

- ▶ Carbon steel plastering trowel with plastic handle



Code	HDP 125
Size	280×125mm

- ▶ Carbon steel plastering trowel with plastic handle



Code	HDP 126
Size	280×125mm

- ▶ EVA trowel with plastic handle



Code	HDP 130
Size	300×100mm

- ▶ Stainless steel plastering trowel with plastic handle



Code	HDP 127
Size	280×125mm

- ▶ Carbon steel plastering trowel with plastic handle



Code	HDP 131
Size	9" X 4"



- ▶ Carbon steel plastering trowel with wooden handle

Code	HDP 127W
Size	280×125mm

BUILDING MATERIALS

- ▶ Chrome vanadium steel plastering trowel with Comfort Handle



Code	HDP 127B
Size	280x130x0.8

- ▶ Sponge trowel with wooden handle



Code	HDP 129
Size	300*100mm

BRICKLAYING TROWEL

- ▶ Carbon steel bricklaying trowel with wooden handle



Code	HDP 120
Size Inches	5", 6" & 8"

- ▶ Carbon steel bricklaying trowel with wooden handle



Code	HDP 122
Size Inches	8"

- ▶ Carbon steel bricklaying trowel with plastic handle



Code	HDP 121
Size Inches	6" & 8"

- ▶ Carbon steel bricklaying trowel with wooden handle



Code	HDP 123
Size Inches	6"

ADHESIVE TAPE

FIBERGLASS SELF ADHESIVE TAPE

ORYX Alkali-resistant glass-fiber tape reinforces joints to provide a strong, continuous surface. Made of alkali-resistant glass-fiber mesh, ORYX® Brand Joint Tape provides a strong, long-lasting, reinforced joint that resist crack-ing. This versatile product can be used for interior or exterior corners as well as on flat surfaces.

Specification:

Unit weight	Size	Color	Width	Length
65g/m2	8x8/mm	White	50mm	90/45m



FIBERGLASS MESH FABRIC

ORYX Fiberglass Mesh has high alkali-resistant features and good strength which makes it ideal for external wall insulation, roofing and water proofing.

Specification:

Unit weight	Size	Color	Width	Length
60g / 70g	2.5×2.5mm	White	1M	50m / 100m



BUILDING MATERIALS

CLEAR TAPE

- ▶ Strong clear tape for packaging.
- ▶ Ideal for holding together your boxes securely.

Size: 2" - 48mm



USA Quality

BROWN BOPP TAPE

- ▶ BOPP Self Adhesive tapes for General purpose packing
- ▶ Excellent Finish.
- ▶ Good Adhesion Strength.

Size: 2" - 48mm



USA Quality

DUCT TAPE

- ▶ Use for bonding, patching, clamping and more.
- ▶ Adheres to smooth and rough surfaces.
- ▶ Great for home, construction site and contractor use.

Size: 2" - 48mm / 3" - 76mm



USA Quality

ALUMINIUM FOIL TAPE

- ▶ Strong aluminium tape for repairs on metallic surfaces.
- ▶ Suitable for protecting, covering, insulating and repairing.
- ▶ Mechanical stress, oils, acids and grease resistant.

Size: 2" - 48mm / 3" - 76mm



USA Quality

GENERAL

COLD CHISEL FLAT

- ▶ For, shaping, cutting, chipping stones and cement
- ▶ Ergonomic comfort grip TPR guard
- ▶ Hardened Steel
- ▶ Hexagonal shaft

CODE	SIZE
HT OCF8	8"
HT OCF10	10"
HT OCF12	12"



COLD CHISEL POINTED

- ▶ For, shaping, cutting, chipping stones and cement
- ▶ Ergonomic comfort grip TPR guard
- ▶ Hardened Steel
- ▶ Hexagonal shaft

CODE	SIZE
HT OCP8	8"
HT OCP10	10"
HT OCP12	12"



OTHERS

NOORA BRUSH

CODE	SIZE mm
HDP 501	170 x 52



PVC BUCKET



STEEL WIRE BRUSH WITH WOODEN HANDLE

Fill types: S to 33
 Rows: 4x16
 Code: HT OWB
 Size: 280mm



HAND SHOVEL - HEAVY DUTY

CODE: HT OHS



BUILDING MATERIALS

3 PCS CHALK LINE SET

CODE: HT OCLS

- ▶ 15 m/50 feet chalk box
- ▶ 30 m/100 feet chalk box
- ▶ 113 g/4 oz chalk
- ▶ Blue marker



ROPE

- ▶ Nylon Rope
2, 3, 4, 5, 6, 8, 10 & 12mm
- ▶ Cotton braided Rope
6 & 7 mm
- ▶ Twin Rope
Colors: Blue, Yellow,
green & White



PLUMB BOB

- ▶ No
4, 5 & 6



BLUE PE TARPAULIN

- ▶ **Size:** 9x9, 9x12, 12x12, 12x15, 12x18,
15x15, 18x18, 18x24, 24x24, 24x30, 30x30,
30x40, 40x40, 40x50, 50x50, ft



PAD LOCK

Brass Core: 20, 25, 30, 32, 38, 50, 63, & 75 mm

A close-up photograph of a person's hands wearing white gloves, using a pair of blue-handled wire cutters to strip the insulation off a white electrical wire. The background is blurred, showing other tools and equipment.

ELECTRICAL TOOLS

ELECTRICAL TOOLS

ELECTRICAL

VOLTAGE TESTER

- ▶ Long-life neon light Continously
- ▶ Use above 20,000 hours
- ▶ Test Range: AC100-500V

CODE
HT OEVTI



- ▶ Test Range: Ac100-500V

CODE
HT OEVTC



AMERICAN TYPE ELECTRIC WELDING CLAMP

- ▶ Tip head american type 500A

CODE
HT OEWC



AMERICAN TYPE EARTH CLAMP 500AMP

- ▶ American type earth clamp 500A

CODE
HT OEC





CABLE EXTENSION REEL

1.5mm x 25mtr & 1.5mm x 50mtr

INDUSTRIAL SOCKET 16A & 32A



MALE SOCKET



FEMALE SOCKET



WALL MOUNTED SOCKET

WELDING ELECTRODE



Available Sizes : 2.5x300mm, 3.2x300mm & 4x300mm

Model : J421 (J38.12)

GB(AWS) : E6013, GBE 4313, GB/T5117-1995

PLUMBING & SANITARY



PLUMBING & SANITARY

TAPS

AQUA CLUB SINGLE LEVER KITCHEN MIXER

CODE: AC WMA002



AQUA CLUB SINGLE LEVER BASIN MIXER

CODE: AC WMA007



AQUA CLUB SINGLE LEVER BATH MIXER

CODE: AC WMA009



AQUA CLUB TWO HANDLE KITCHEN MIXER

CODE: AC WMC002



AQUA CLUB TWO HANDLE BASIN MIXER

CODE: AC WMC003



AQUA CLUB LONG NOSE KITCHEN MIXER

CODE: AC WMC005



KITCHEN SINK



Single bowl & Double bowl

1.5x0.5 & 1x0.5 mtr R/L

PLUMBING & SANITARY

OTHERS

BALL VALVE & WATER TAP



2", 3", 4"

3/4", 1/2", 1"

SHOWER TRAY



70x70cm
80x80cm

PLASTIC STRAINER



15 x 15cm
20 x 20cm

PLASTIC MIRROR



Rectangle & Round

White & Beige

PLASTIC TOILET SEAT COVER

White, Light & Heavy duty



SHATTAF



PRESSURE COTROLLER



PVC YELLOW/BLACK GARDEN HOSE



Size	Wall Thickness MM	Working Pressure Kg/cm ²
1/2" X 50 Mtrs	1.7	7
3/4" X 50 Mtrs	2.2	7
1" X 50 Mtrs	2.8	5



HARDWARE

HARDWARE

DOOR HANDLE
WAVES
DESIGN - 180

CODE: HT ODH180



DOOR HANDLE
SLANTED WAVES
DESIGN - 19986

CODE: HT ODH19986



DOOR HANDLE
PLAIN GOLD
DESIGN - 9964

CODE: HT ODH9964



DOOR HANDLE
EDGE FLOWER
DESIGN - 99123

CODE: HT ODH99123



DOOR HANDLE
TICK MARK
DESIGN - 9929

CODE: HT ODH9929



DOOR HANDLE
COPPER PIGEON
DESIGN - 9904

CODE: HT ODH9904



DOOR HANDLE
SILVER STUMP
DESIGN - 117

CODE: HT ODH117



DOOR HANDLE
GOLDEN TASSEL
DESIGN - 8569 MINI

CODE: HT ODH8569M



DOOR HANDLE
SILVER VASE
DESIGN - 233
MINI

CODE: HT ODH233M



DOOR HANDLE
WAVES DESIGN
8547 MINI

CODE: HT ODH8547M



DOOR HANDLE
GOLD GATE
DESIGN - 8516
MINI

CODE: HT ODH8516M



DOOR HANDLE
COPPER LEAF
DESIGN - 8539
MINI

CODE: HT ODH8539M



HARDWARE

DOOR HANDLE
GOLDEN VASE
DESIGN - 19911

CODE: HT ODH19911



DOOR HANDLE
GOLD WATCH
DESIGN - GP42

CODE: HT ODHGP42



DOOR HANDLE
COPPER VINE
DESIGN - 9956

CODE: HT ODH9956



DOOR HANDLE
HALF MOON
DESIGN - 9954

CODE: HT ODH9954



DOOR HANDLE
CROSS SWORDS
DESIGN - 9931

CODE: HT ODH9931



DOOR HANDLE
COPPER CHAIN
DESIGN - 9926

CODE: HT ODH9926



DOOR HANDLE
SILVER WATCH
DESIGN -211

CODE: HT ODH211



DOOR HANDLE
WATER SPLASH
DESIGN -262

CODE: HT ODH262



DOOR HANDLE
CLAW
DESIGN - 418

CODE: HT ODH418



DOOR HANDLE
PLAIN SILVER
DESIGN - 854

CODE: HT ODH854



DOOR HANDLE
GOLDEN EDGE
DESIGN - 9945

CODE: HT ODH9945



DOOR LOCK CYLINDER -
68MM ONE SIDE
LOCK

CODE: HT ODLC1L68



DOOR LOCK CYLINDER -
70MM TWO SIDE
LOCK - II9

CODE: HT ODLC2L70



DOOR LOCK CYLINDER -
68MM TWO SIDE
LOCK - II

CODE: HT ODLC2L68



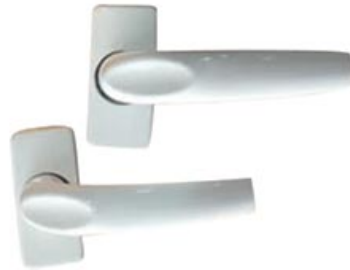
HARDWARE

HAPS & STAPLES

2", 2.5", 3", 4"



ALUMINIUM DOOR HANDLE



HINGES

Concealed, Kitchen & Cupboard Hinges



DOOR PULL DRAWER HANDLE



DOOR STOPPER



DOOR BRUSH



TILE SPACER

1.5, 2, 2.5, 3 & 4 mm



SAND DISC



DOOR LOCK BODY



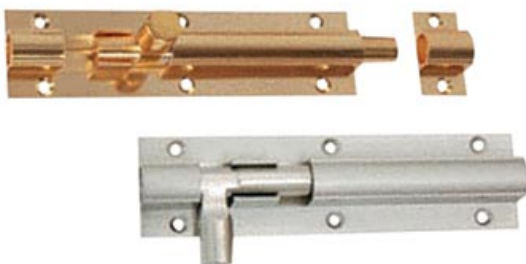
ALUMINIUM LOCK BODY



DOOR CLOSER



MORTISE LOCK



TOWER BOLT (BP, CP, ALUMINIUM)

2", 3", 4", 5", 6"

FASTENERS



FASTENERS

SCREWS

SELF TAPPING SCREW CSK PHILIPS HEAD NICKEL PLATED



DESCRIPTION SIZE (D) SIZE (L) QTY./PKT.

6 X 1/2"	6	1/2"	1000
6 X 5/8"	6	5/8"	1000
6 X 3/4"	6	3/4"	1000
6 X 1"	6	1"	1000
6 X 1 1/4"	6	1 1/4"	1000
6 X 1 1/2"	6	1 1/2"	1000
6 X 2"	6	2"	500
8 X 5/8"	8	5/8"	1000
8 X 3/4"	8	3/4"	1000
8 X 1"	8	1"	1000
8 X 1 1/4"	8	1 1/4"	500
8 X 1 1/2"	8	1 1/2"	500
8 X 2"	8	2"	500
8 X 2 1/2"	8	2 1/2"	500
8 X 3"	8	3"	250
10 X 1"	10	1"	1000
10 X 1 1/2"	10	1 1/2"	500
10 X 1 1/4"	10	1 1/4"	500
10 X 2"	10	2"	500
10 X 2 1/2"	10	2 1/2"	250
10 X 3"	10	3"	250
10 X 4"	10	4"	250

BRIGHT MILD STEEL WOOD SCREWS



Countersunk Head, zinc Plated, B.S 1210

DESCRIPTION SIZE (D) SIZE (L) QTY./PKT.

10 X 1 1/2"	10	1 1/2"	144
10 X 2"	10	2"	144
10 X 2 1/2"	10	2 1/2"	144
10 X 3"	10	3"	144
10 X 4"	10	4"	144

FIX BOLT



Available sizes

M6 X 50mm, M8 X 60mm, M10 X 70 mm, M12 X 90mm

M16 X 110mm

FASTENERS

BUGLE HEAD, FINE THREAD SHARP, GRAY PHOSPHATE SCREW

- ▶ One of the finest quality fasteners of world in gray phosphate for attaching drywall to 25 GX (0.75) metal studs.



DESCRIPTION	SIZE (D)	SIZE (L)	QTY./PKT.
6 X 3/4"	6	3/4"	1000
6 X 1"	6	1"	1000
6 X 1 1/4"	6	1 1/4"	1000
6 X 1 1/2"	6	1 1/2"	1000
6 X 2"	6	2"	500
7 X 2 1/2"	7	2 1/2"	500
8 X 1"	8	1"	1000
8 X 1 1/4"	8	1 1/4"	1000
8 X 1 1/2"	8	1 1/2"	1000
8 X 2"	8	2"	500
8 X 2 1/2"	8	2 1/2"	500
8 X 3"	8	3"	500
10 X 4"	10	4"	200

BUGLE HEAD SELF DRILLING SCREW (GRAY PHOSPHATE / WHITE ZINC)

- ▶ Drywall screw with drill tip is used for attaching plasterboard to steel studs from 0.7mm upto 2.25mm without pre-drilling.



DESCRIPTION	SIZE (D)	SIZE (L)	QTY./PKT.
6 X 3/4"	6	3/4"	1000
6 X 1"	6	1"	1000
6 X 1 1/4"	6	1 1/4"	1000
6 X 1 1/2"	6	1 1/2"	1000
6 X 2"	6	2"	500
7 X 2 1/2"	7	2 1/2"	500
8 X 1"	8	1"	1000
8 X 1 1/4"	8	1 1/4"	1000
8 X 1 1/2"	8	1 1/2"	1000
8 X 2"	8	2"	500
8 X 2 1/2"	8	2 1/2"	500
8 X 3"	8	3"	500
10 X 4"	10	4"	200

PAN FRAMING SELF DRILLING SCREW

- For attaching steel strapping (bridging) or furring channel to steel joist.



DESCRIPTION	SIZE (D)	SIZE (L)	QTY./PKT.
6 X 7/16" GREY PHOSPHATE	6	7/16"	1000
6 X 7/16" WHITE ZINC	6	7/16"	1000

WAFER HEAD SELF DRILLING SCREW (WHITE ZINC)

- For attaching metal lath to heavy guage (14-20) metal studs.



DESCRIPTION	SIZE (D)	SIZE (L)	QTY./PKT.
6 X 7/16"	6	7/16"	1000
8 X 1/2"	8	1/2"	1000
8 X 3/4"	8	3/4"	1000
8 X 1"	8	1"	1000
8 X 1 1/2"	8	1 1/2"	1000

HAMMER FIXING SCREW

- For wall plates, Battens, Sole plates, Door and window frames etc...



SIZE:

10X100, 10X120, 10X140 & 10X160

FASTENERS

OPEN (ALUMINIUM/STEEL) BLIND RIVET (DOME(BODY)POLISH(MANDREL)ZINC PLATED)

- ▶ The classic fastener, Normally manufactured by cold forging the eyelet from wire, long length rivets can produced from tube, easily identified by the rolled flange.



DESCRIPTION	SIZE (D)	SIZE (L)	QTY./PKT.
3.2 X 12	3.2	12	1000
3.2 X 14	3.2	14	1000
3.2 X 16	3.2	16	1000
3.2 X 19	3.2	19	1000
4.0 X 12.7	4.0	12.7	1000
4.0 X 14	4.0	14	1000
4.0 X 16	4.0	16	1000
4.0 X 22.2	4.0	22.2	1000
4.0 X 25.4	4.0	25.4	1000
4.8 X 25.4	4.8	25.4	1000
4.8 X 12.7	4.8	12.7	1000
4.8 X 14	4.8	14	1000
4.8 X 19	4.8	19	1000
4.8 X 22.2	4.8	22.2	1000
4.8 X 25.4	4.8	25.4	500

SELF DRILLING SCREW HEX HEAD (ZINC PLATED WITH 16MM STEEL & RUBBER WASHER)

- ▶ For medium & heavy duty purposes
- ▶ Roof deck to steel framing
- ▶ Accessories to steel framing



DESCRIPTION	SIZE (D)	SIZE (L)	QTY./PKT.
14 X 1"	14	1"	500
14 X 1 1/4"	14	1 1/4"	400
14 X 1 1/2"	14	1 1/2"	400
14 X 2"	14	2"	300
14 X 2 1/2"	14	2 1/2"	250
14 X 3"	14	3"	200
14 X 4"	14	4"	150
14 X 5"	14	5"	100

HOSE CLAMP

- ▶ Size
1/2", 3/4", 5/8", 1", 1 1/4",
1 1/2", 2", 2 1/2", 3", 4" & 6"





Hammam Trading & Contracting Co.
Building No: 6, Shop No: 45
Barwa Village, Al Wakrah. Qatar

T : +974 4441-1026
: +974 4432-1781
F : +974 4442-8403

Website: www.hammamco.qa
E mail : info@hammamco.qa